

Playout ONE

Remote Voice Tracker

radiostationsolutions

USER MANUAL

v.2.0

By Bernie Schwëinsteiger

Contents

BACKGROUND NOTES.....	3
License.....	3
Dropbox.....	3
Setting up Dropbox for Radio Stations.....	4
SETUP FOR RADIO STATIONS.....	5
VT Prefix.....	5
Running the Software.....	6
Auto Importer.....	10
SETUP FOR REMOTE DJ'S.....	11
Running the Software.....	11
Auto Importer.....	Error! Bookmark not defined.
Requesting a Remote Playlist.....	15
Voice Tracking the Remote Playlist.....	16

BACKGROUND NOTES

PlayoutONE RVT is a free application and comes as part of the **PlayoutONE** suite of programs; however, it does have some license restrictions.

License

The only difference between the professional and standard copy of the software is that the standard version does not allow the option of **Automatic Refresh for Radio Stations**. **Automatic Refresh** means the software will automatically send and receive audio and playlists between the Radio Station and the Remote DJ(s).

When the software is unlicensed, the **'Refresh'** button will need to be pressed each time to send and receive audio and playlists at the radio station. Automatic Refresh does however work for Remote DJs.

Dropbox

PlayoutONE RVT recommends Dropbox to transfer the files between the radio station and the remote DJ(s). Other syncing products can be used; however, **PlayoutONE RVT** has only had extensive testing with Dropbox.

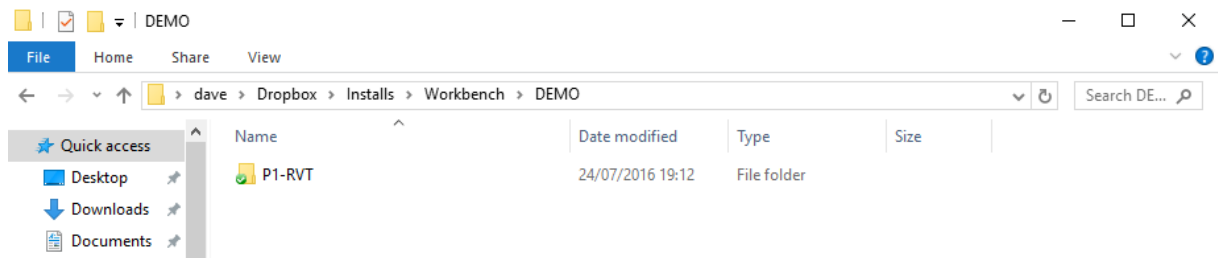
We recommend that the radio station sets up the Dropbox folder required and shares the folder with the remote DJ(s). This means the radio station can grant and revoke access easily.

Setting up Dropbox for Radio Stations

Setting up Dropbox is easy and free!

Begin by creating a folder in your main Dropbox folder called **P1-RVT**

You can then share the **P1-RVT** folder with your remote DJs via the Dropbox web interface. The remote DJ(s) will then see this folder within their own Dropbox folder. This is the transportation and authentication method for sending and receiving audio and playlists.



SETUP FOR RADIO STATIONS

Once Dropbox is setup, ensure the following applications are installed on your Radio Stations Server / Main PC.

PlayoutONE
PlayoutONE RVT
Auto Importer

All products can be installed from the main PlayoutONE Installer.

VT Prefix

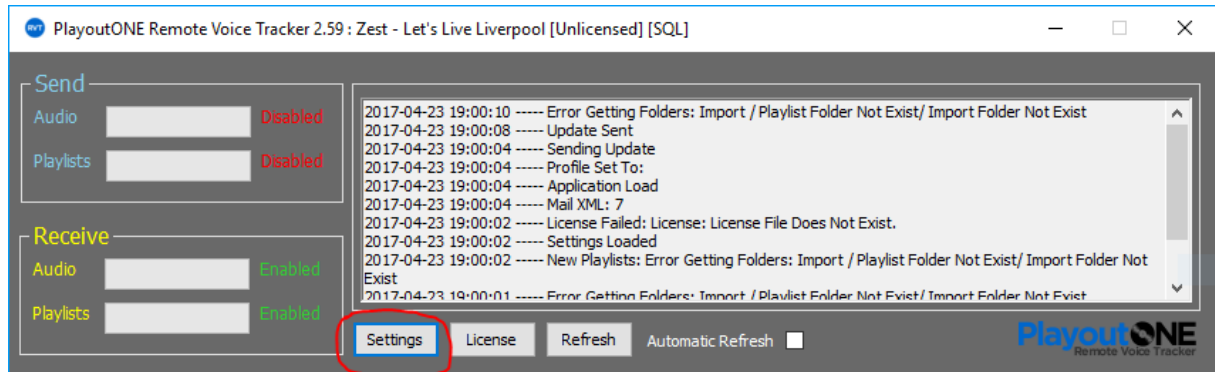
For each remote DJ, a **VT Prefix** needs assigning.

The **VT Prefix** ensures that each Remote DJ(s) audio files are unique to them throughout the system. Each DJ needs their own VT Prefix, otherwise DJs will overwrite each other's files.

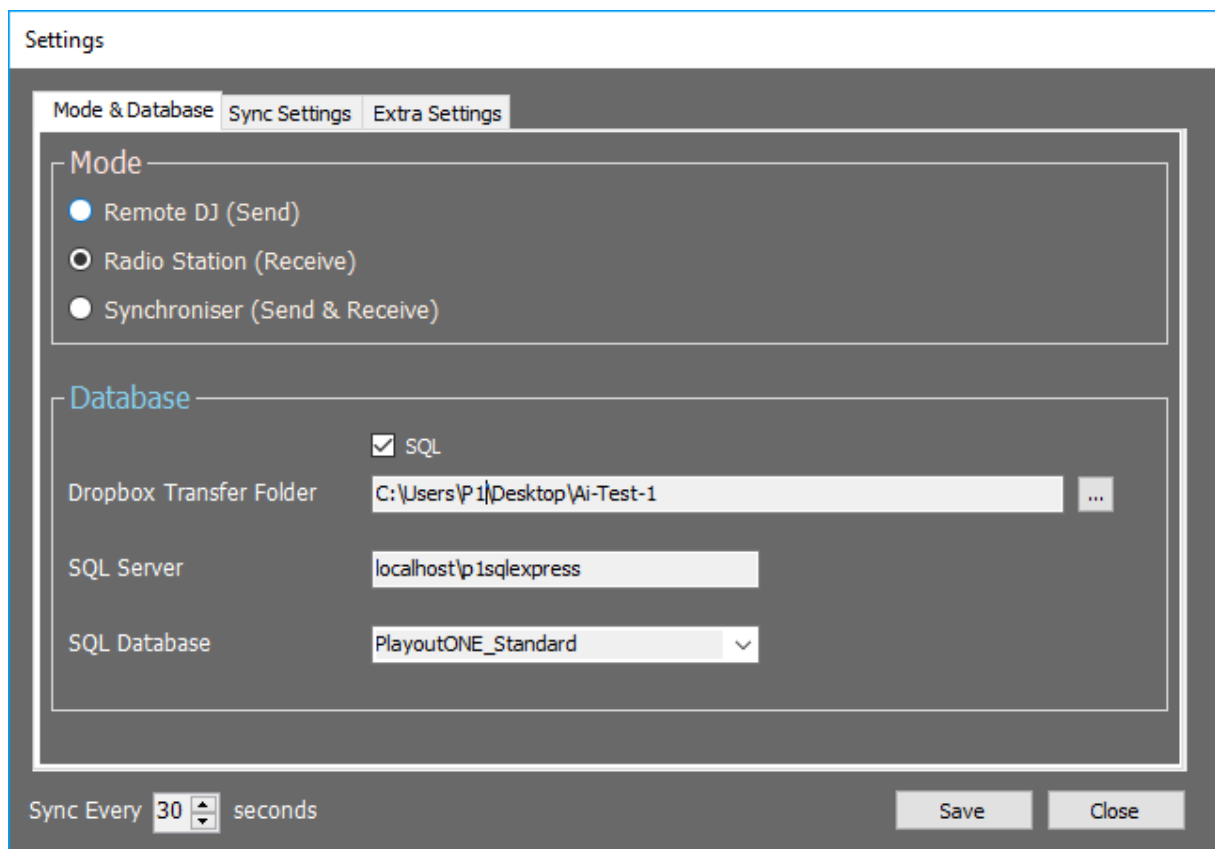
It's also worth noting here that once a **VT Prefix** has been assigned – it cannot be reused – unless all audio is deleted where the ID begins with the **VT Prefix** in the radio station database and remote DJ database.

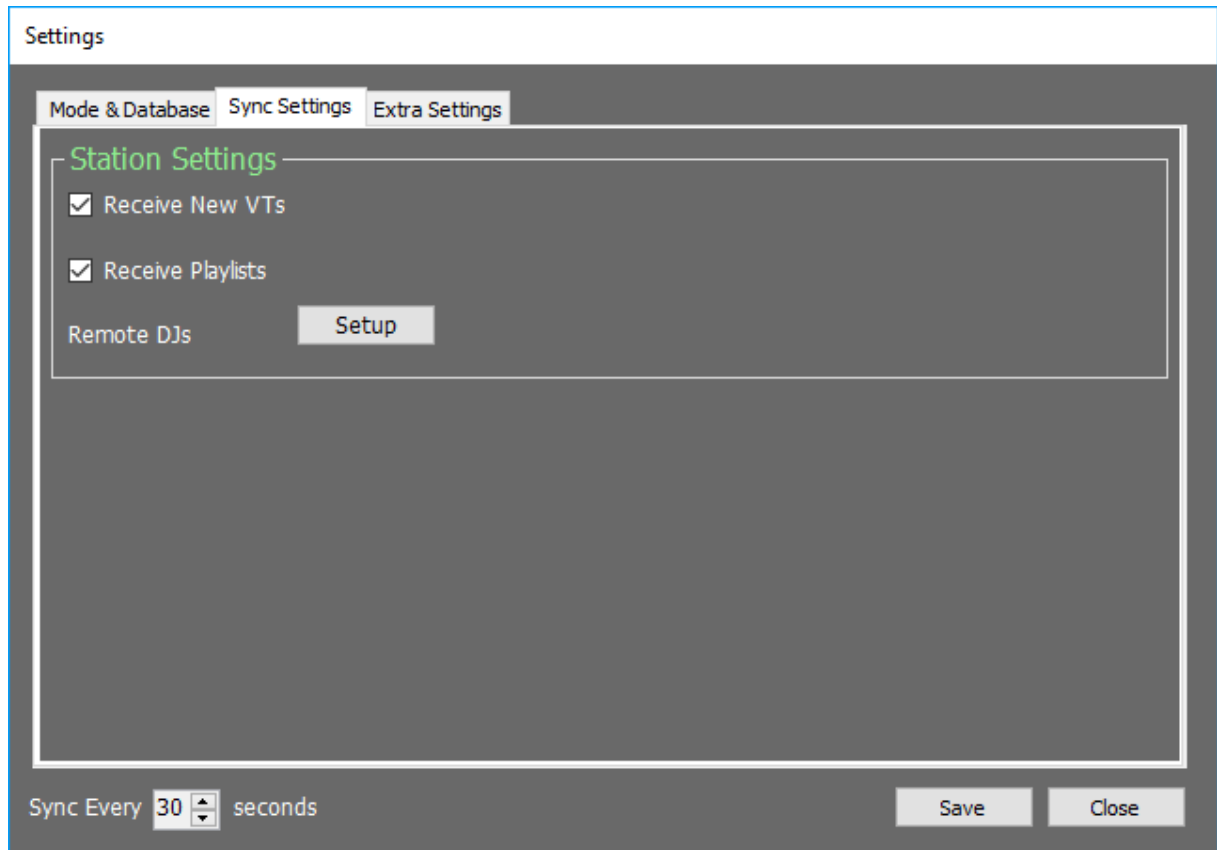
Running the Software

Upon running the RVT software for the first time you will need to click the settings box to configure some settings.



Choose a mode (Radio Station) and also set the database connection for your radio station (Access or SQL)

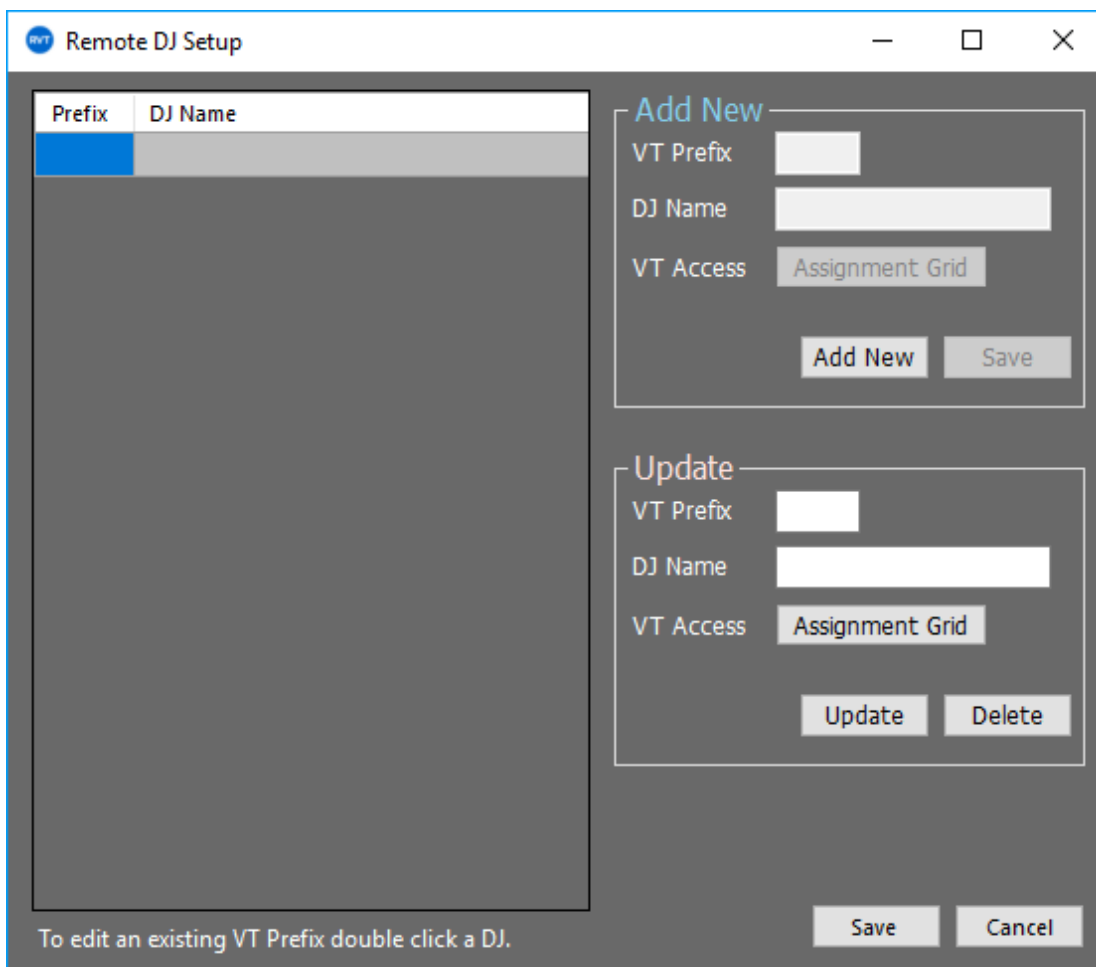




On the Sync Settings Tab:

Tick **Receive New VTs** & **Receive New Playlists**

Click **Setup** to enter the Remote DJ Setup Menu

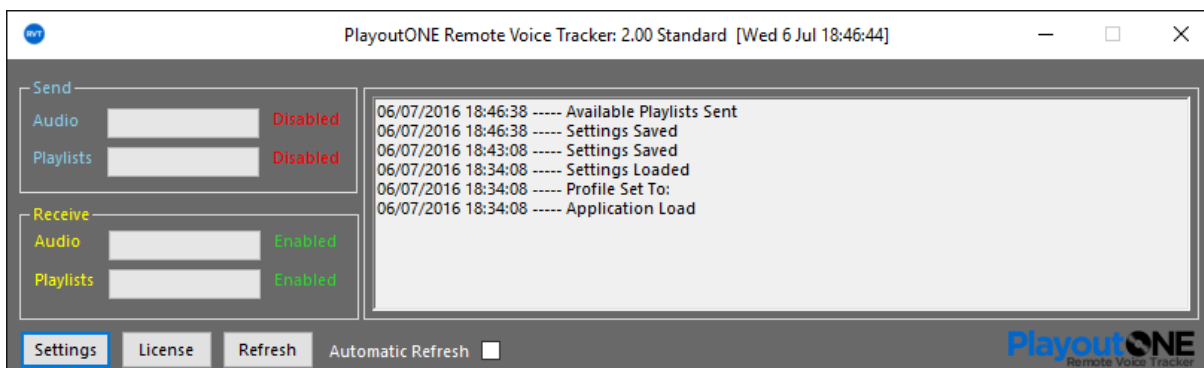


Click **Add New** to fill in each Remote DJ(s) **VT Prefix**, **Name** and assign access via the **Assignment Grid**. When finished, click **Save** to add the DJ to the list. Repeat for each DJ you want to have access to the system.

Click **Save** to return to the setup menu.

Then click **Save** to save the main settings.

You should then see that the Receive section is **enabled** and the Send section is **disabled**.



if you have a Licensed copy of RVT then tick the '**Automatic Refresh**' box.

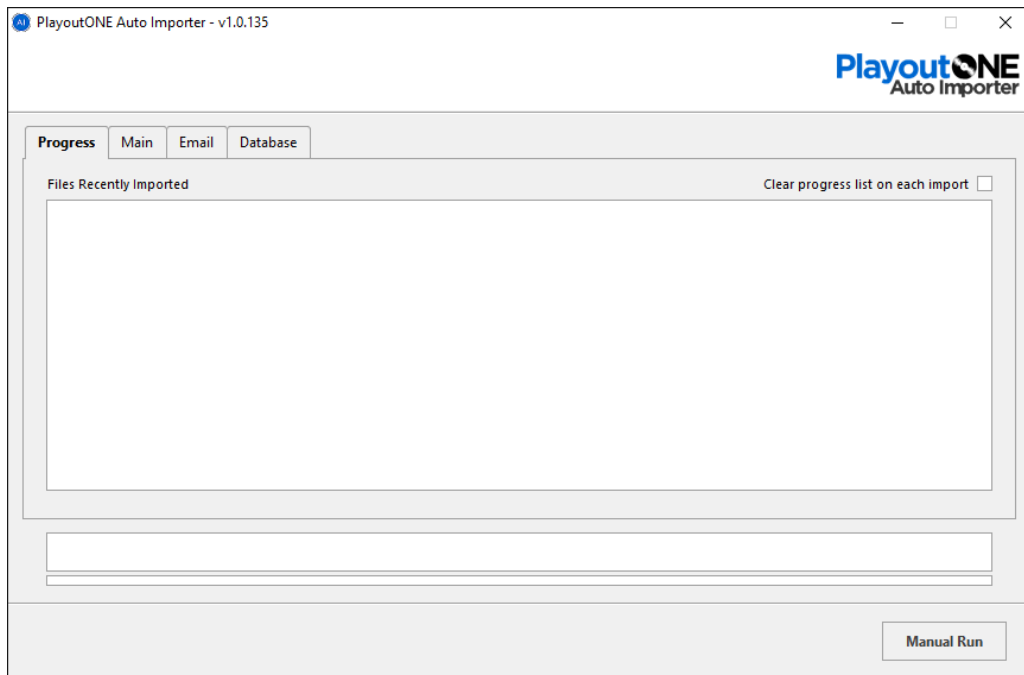
Licensed versions of the software can then be minimized and left alone to run unattended. Unlicensed users will need to repeatedly click '**Refresh**' to process remote voice track jobs and receive audio. It's with strong

recommendation that radio stations purchase a licensed version. Email support@playoutone.com for more information.

Auto Importer

Once **PlayoutONE RVT** receives the audio files from the Remote DJ, it copies the audio to the Import Folder for **Auto Importer** to import into PlayoutONE.

Without **Auto Importer** - files will not be imported into your PlayoutONE system.



Run **Auto Importer** and make sure at least the following settings are set:

Main Tab:

Make sure your Data Folder and Import Folder are set.

Database Tab:

Make sure Always Auto ID is not ticked.

Other settings are optional and down to the radio station to choose.

For more support contact Radio Station Solutions Support via email support@playoutone.com

SETUP FOR REMOTE DJ'S

As we explained at the start of this manual, **PlayoutONE RVT** requires Dropbox or an equivalent file-syncing program to transfer files securely between you and the radio station.

It's the Radio Stations responsibility to provide you with access to the Dropbox folder.

If you don't have access to this folder then please contact your Radio Station.

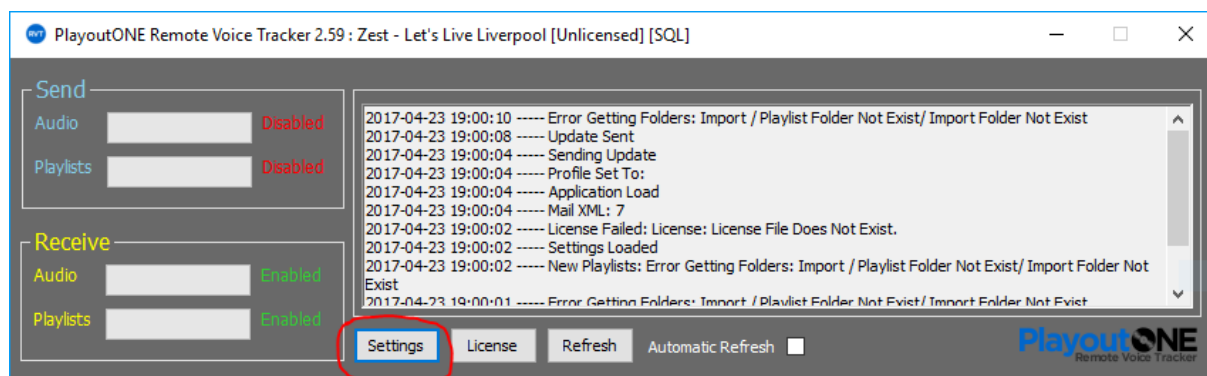
Once Dropbox is setup, ensure the following applications are installed on your Radio Stations Server / Main PC.

PlayoutONE
PlayoutONE RVT
Auto Importer

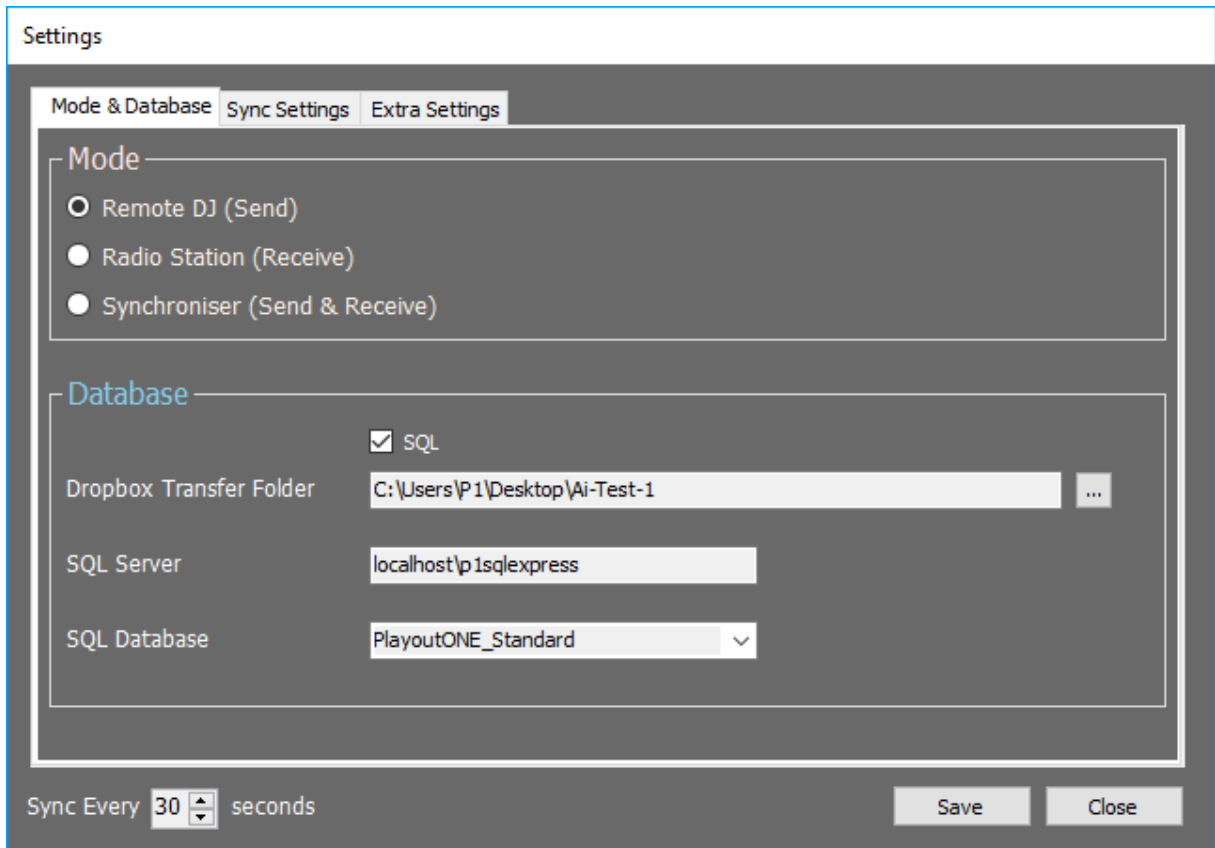
All products can be installed from the main PlayoutONE Installer. We advise you choose the Access Database engine if just using PlayoutONE for Remote Voice Tracking.

Running the Software

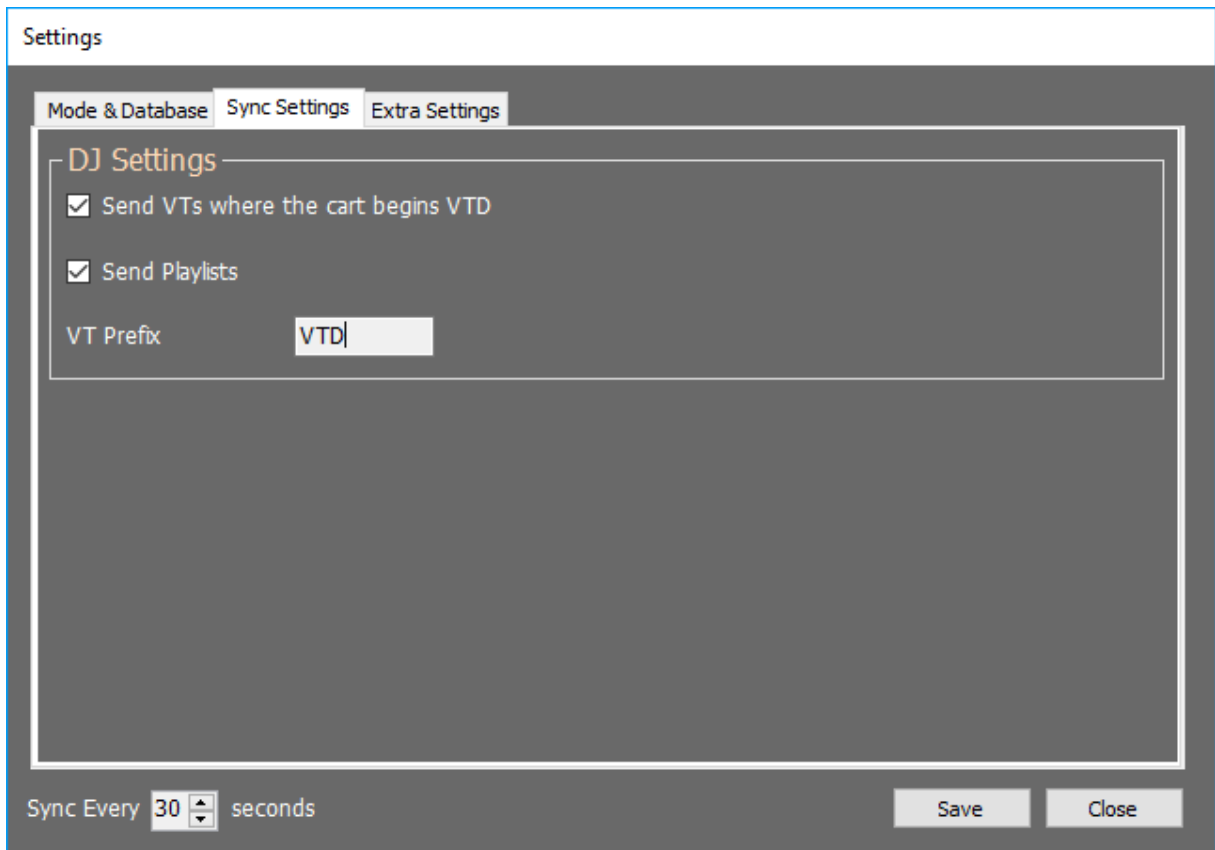
Start **PlayoutONE RVT** and upon the first time you will need to click the settings box to configure your settings.



Next you will need to choose a mode (Remote DJ) and set the database connection. The image below shows a SQL Database configuration.

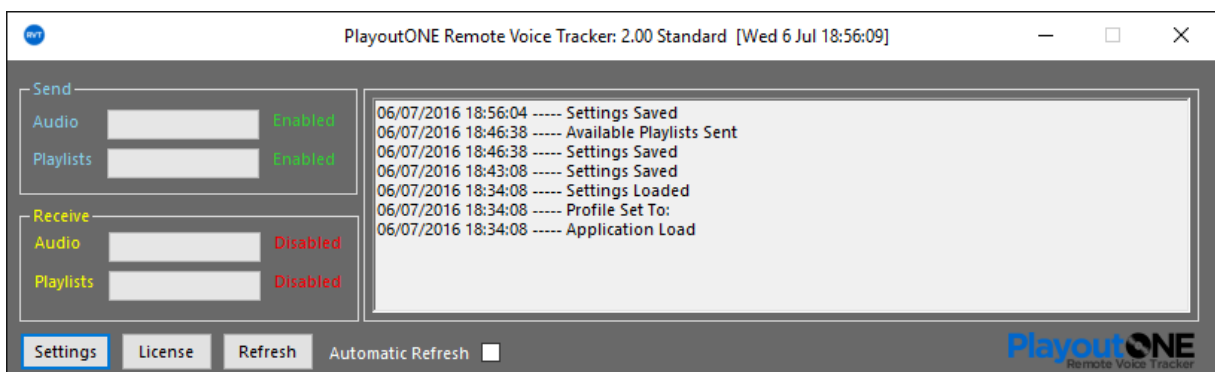


Next click the sync settings tab.



1. Tick 'Send VT's
2. Tick Send Playlists
3. Enter the **VT prefix** given to you by your radio station. **It's very important this is set.**
4. Click **Save**

You should then see that the send section is **enabled** and the receive section is **disabled**.

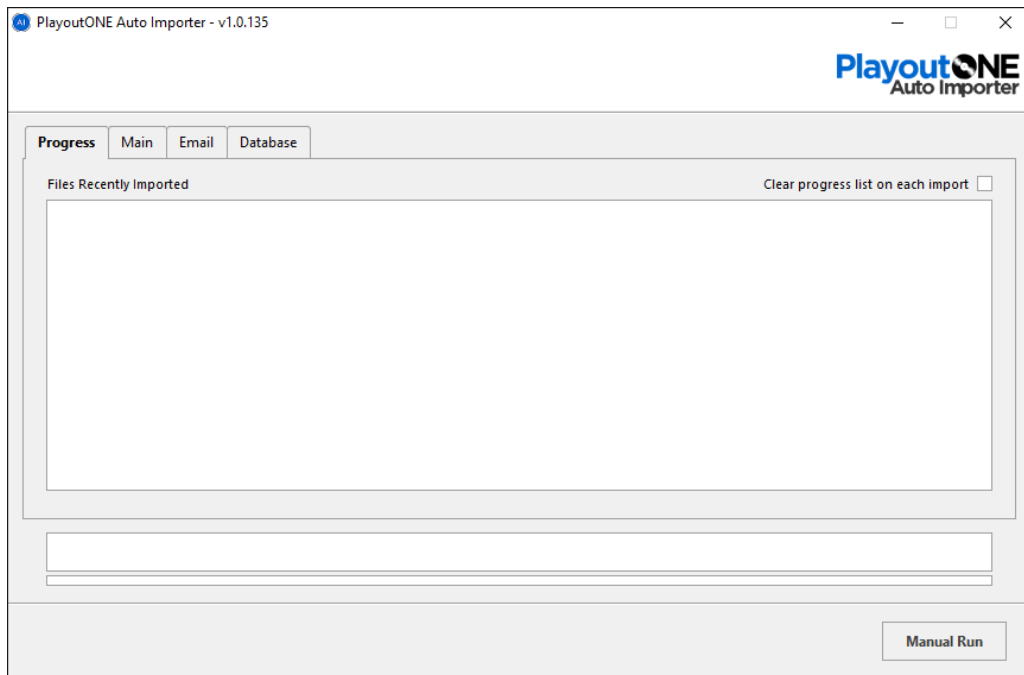


Finally tick the '**Automatic Refresh**' box.

Auto Importer

Once **PlayoutONE RVT** receives the audio files from the Radio Station, it copies the audio to the Import Folder for **Auto Importer** to import into PlayoutONE.

Without **Auto Importer** - files will not be imported into your PlayoutONE system.



Run **Auto Importer** and make sure at least the following settings are set:

Main Tab:

Make sure your Data Folder and Import Folder are set.

Database Tab:

Make sure Always Auto ID is not ticked.

Other settings are optional and down to the remote DJ to choose.

For more support contact Radio Station Solutions Support via email support@playoutone.com

Requesting a Remote Playlist

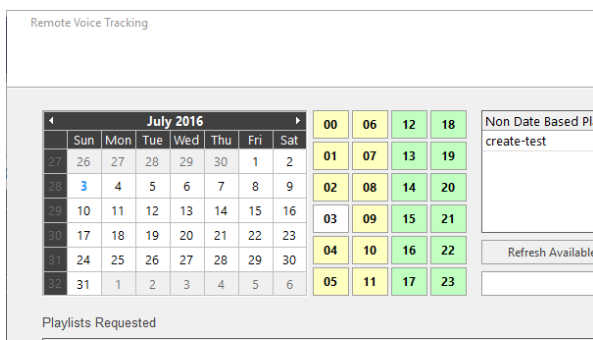
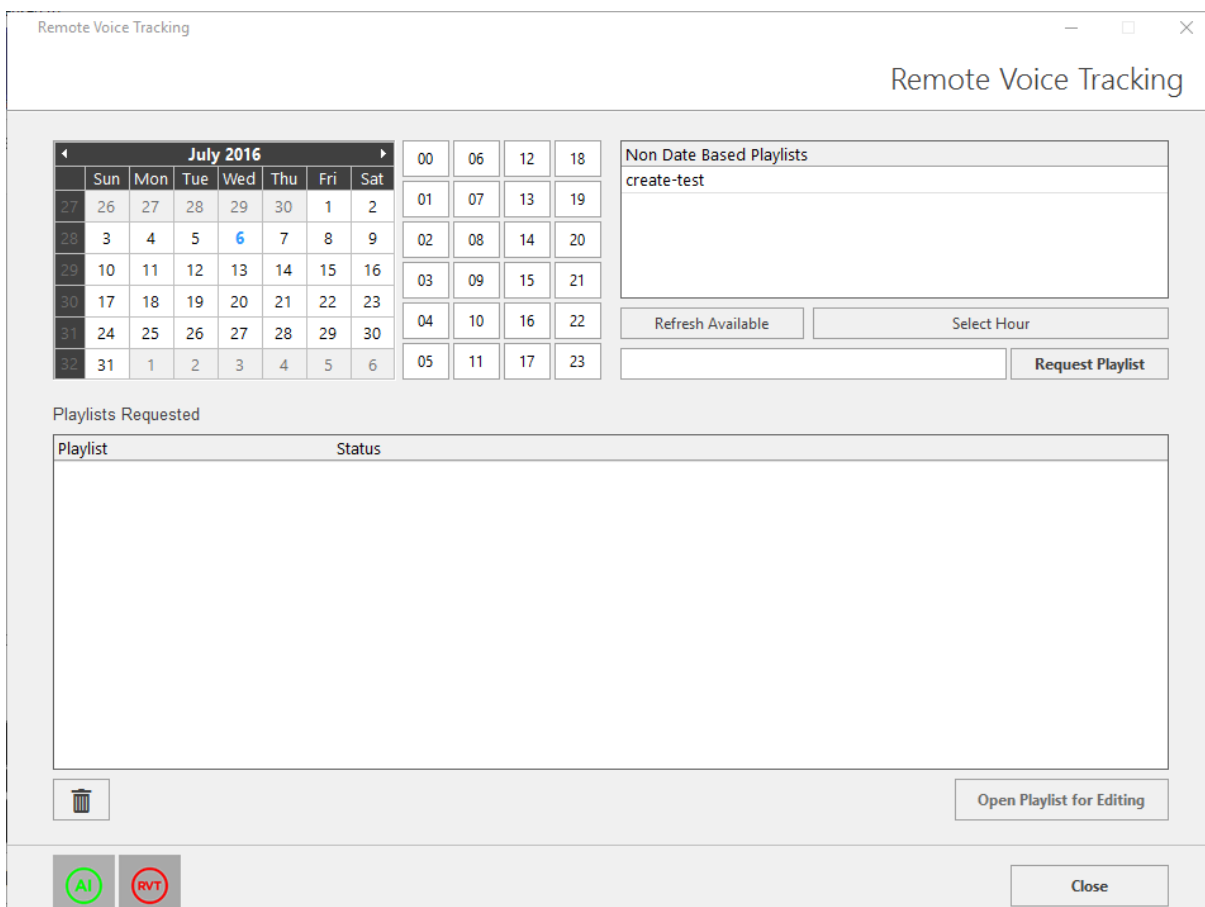
Once Auto Importer & Remote Voice Tracker are setup, open **PlayoutONE**.

At the license box, choose the **RVT Mode** button.

Once **PlayoutONE** opens click the **RVT icon** in the top menu bar.



The RVT window will then open.



From here you can select an available playlist by choosing a date from the calendar.

If the hour buttons light up yellow or green then a playlist is available to be requested from the radio station for voice tracking.

Just click the hour you wish to VT and then click **Request Playlist** button

You can also choose **'Non Date'** playlist. Just double click the playlist name and then click **'Request Playlist'**

You will then receive status messages for each playlist requested. There is no limit on how many playlists you can request at one time.

Voice Tracking the Remote Playlist

When a playlist is ready for voice tracking it will show green in the Requested Box.

Select the playlist and click the **'Open Playlist for Editing'** button.

You may then insert your voice tracks into the playlist as you would any normal playlist.

You can move items around, use the segue editor and even add new audio that is not in the radio station database. Just make sure when you add the new audio it begins with your **VT Prefix** otherwise it will not transfer.

Once finished close the playlist creator window.

All changes you make will happen in real-time.

UID	AirTime	Title	Artist	Chain	Length
	20:40:07	START PLAYLIST 2015092023.dpl		<input checked="" type="checkbox"/>	00:00
48098	20:40:07	JIN: SHOTGUN		<input checked="" type="checkbox"/>	00:04
48042	20:40:11	Come and Get It	John Newman	<input checked="" type="checkbox"/>	03:01
48056	20:43:11	SWP: 87.7 AIRSHOW FM H		<input checked="" type="checkbox"/>	00:03
30017	20:43:14	Solid	Ashford & Simpson	<input checked="" type="checkbox"/>	03:17
48094	20:46:31	SWP: TWEET B		<input checked="" type="checkbox"/>	00:00
43423	20:46:31	Starlight	Supermen Lovers	<input checked="" type="checkbox"/>	03:21
48055	20:49:52	SWP: 87.7 AIRSHOW FM G		<input checked="" type="checkbox"/>	00:00
48035	20:49:52	Lean On (feat. MØ & DJ Snake)	Major Lazer	<input checked="" type="checkbox"/>	02:52
48097	20:52:44	JIN: SLOGAN		<input checked="" type="checkbox"/>	00:07
33094	20:52:52	Jumpin' Jack Flash	Rolling Stones	<input checked="" type="checkbox"/>	03:27
48086	20:56:18	SWP: TUNEIN APP C		<input checked="" type="checkbox"/>	00:00
4	20:56:18	Sing	Ed Sheeran	<input checked="" type="checkbox"/>	03:20
48103	20:59:38	JIN: SAT FLYING PROGRAMME (SUN		<input checked="" type="checkbox"/>	00:32
30	21:00:10	Cheerleader	OMI	<input checked="" type="checkbox"/>	02:59

Playlist Total Time: 01:02:20 Gap Time: -02:17:26

For more support contact Radio Station Solutions Support via email support@playoutone.com